



Memorandum

Date: September 19, 2024
To: Board of Directors
From: Kellyx Nelson
Subject: Notification of subaward to Montara Water and Sanitary District for the
Vallemar Sewer and Water Relocation Project

This memorandum is to notify you that the RCD has issued a subaward via a contract for \$490,924 to Montara Water and Sanitary District (MWSD) to conduct technical surveys and produce 65% designs for the *Vallemar Sewer and Water Relocation Project*. The subaward is passed through a grant to the RCD from the State Coastal Conservancy in the amount of \$813,500.

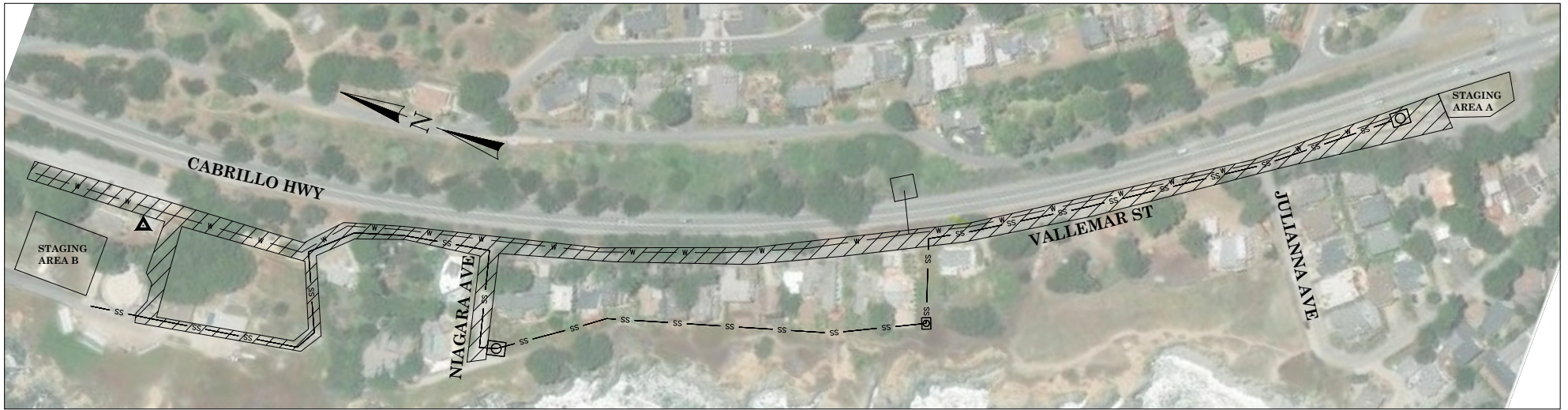
This multi-hazard mitigation project will prevent catastrophic loss of sanitary sewer infrastructure for 25 houses in Montara located on the coast of the Fitzgerald Marine Reserve by moving the existing sewer and water lines from the eroding cliff up to Vallemar Street. It will also improve the management of approximately 800 sewer connections, or 40% of the district, as well as improving an old and fragile sewer pipe where it crosses above Dean Creek above the outlet into the marine reserve.

The RCD's *Procurement and Subaward Policy* adopted on May 18, 2023 describes the process by which we may enter into a contract without a competitive selection process through a subaward of financial assistance to an eligible organization such as a government agency. Some characteristics outlined in the policy that support the classification of MWSD as a subrecipient rather than a contractor include that MWSD:

- has responsibility for programmatic decision-making;
- requires considerable discretionary judgment in the performance of the work;
- contributes to the conduct of the project as described in the statement of work for the prime award; and
- uses the funding to carry out a program for the entity's public purpose as specified in their mission statement or authorizing statute.

The policy requires that the Executive Director notify the Board of Directors of signed subaward agreements exceeding \$60,000.

Attachment: map of work area



VALLEMAR WORK AREA

0 80 160
SCALE IN FEET



NEVADA WORK AREA

0 80 160
SCALE IN FEET

LEGEND

- (E) WATER LINE
- (E) SEWER LINE
- WORK AREA
- SANITARY SEWER PUMP STATION
- MONTARA WATER AND SANITARY DISTRICT OFFICE
 8888 CABRILLO HWY, MONTARA, CA 94037

Montara Water and Sanitary District
WORK AREA LOCATIONS
JUNE 30, 2022
SKETCH 1 OF 2